

## Quest Web Parts for SharePoint

### Quest Web Parts and Their Capabilities

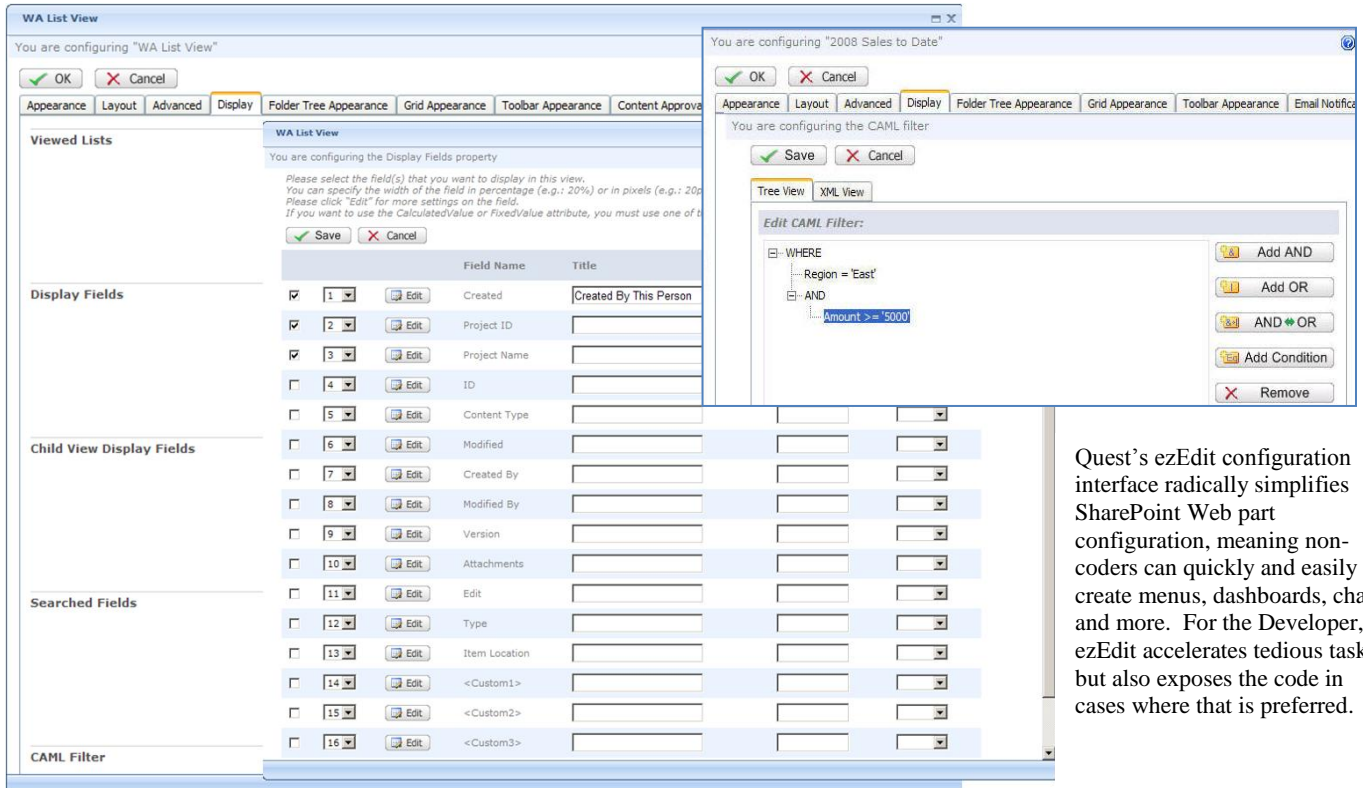
The following table lists the key capability for each of the Quest Web parts. Each capability is more deeply detailed in the section that follows.

Quest Web Part	Key Capability
<b>qListView</b>	Simply combine data from multiple lists, even across sites, site collections and web applications
<b>qChartView</b>	Create compelling 2-D or 3-D charts with information from multiple lists, even lists in different sites, site collections and web applications
<b>qCalendarView</b>	Combine all your calendars into one view, including data from non-calendar lists
<b>qExcelView</b>	View data in Microsoft Excel, based on criteria passed from qListView, even when that data is not shown in the qListView
<b>qDiscussionView</b>	View the topic and responses of multiple discussion lists in one tree view and preview the selected item in a preview panel
<b>qList Form</b>	Create more advanced and capable forms, including the ability to separate into tabs and create space
<b>qSelector</b>	Displays data from a SharePoint list in a dropdown control
<b>qMultiSelector</b>	Allows you to view master-detail data in multiple selectors
<b>qItemDisplay</b>	Allows you to view a single item that has been selected in the qSelector, qListView or qListForm
<b>qPanelMenu</b>	Allows you to have a collapsible and hierarchical panel menu for better navigation
<b>qCascadingMenu</b>	Provides a hierarchical menu system, letting you create complex menus that occupy minimum screen real estate
<b>qCaptionDisplay</b>	Displays a message from a centralized SharePoint list, which allows you to maintain the content of the message easily
<b>qHelpLink</b>	Facilitates linking to a help file for your application
<b>qPageRedirector</b>	Allows you to redirect a user to a specific page based on the mapping specified in the page redirector list
<b>qSiListView</b>	Displays data from your external data source in a grid and allows you to execute some actions on the data
<b>qSiListForm</b>	Allows you to create, view and edit your external data in a form
<b>qSiChartView</b>	Allows you to display your external data in a compelling 2-D or 3-D charts
<b>qSiSelector</b>	Allows you to display your external data in a dropdown control

*Quest Web Parts enables simple Rapid Application Development for SharePoint. Finally! The web parts above in pink help you simply enhance, combine and view SharePoint information. Those in blue are focused on enabling you to quickly build real applications in SharePoint. The green enable easy data integration with SharePoint.*

## Unlocking SharePoint's Full Potential. Quickly.

By removing the core challenges of code creation and complex data integration, Quest Web Parts radically simplifies the approach to SharePoint application development. By leveraging ezEdit, Quest Web Parts embedded configuration tool, users configure rather than code and reduce the time required to build applications by up to 80%. ezEdit is used with all of the Quest Web Parts.



Quest's ezEdit configuration interface radically simplifies SharePoint Web part configuration, meaning non-coders can quickly and easily create menus, dashboards, charts and more. For the Developer, ezEdit accelerates tedious tasks, but also exposes the code in cases where that is preferred.

## Descriptions of Capabilities

The following table describes the features and capabilities of each Quest Web part:

<p><b>qListView</b></p>	<ul style="list-style-type: none"> <li>• Data can be aggregated from multiple lists across different sites, site applications or web applications that are in the same configuration database.</li> <li>• Lists can be aggregated by one or more of the three different methods: select individual lists, specify the URLs of the sites in a list, or aggregate the lists in this site and/or its subsites recursively.</li> <li>• Lists with parent-child relationships can be represented in a two-level hierarchical list view.</li> <li>• The qListView honors all the SharePoint security settings. The users can only perform actions that they are allowed to do.</li> <li>• The ability to create a smart link column that enables you to link the data in the column to a specific URL.</li> </ul>
-------------------------	---

<b>qListView</b> <b>(continued)</b>	<ul style="list-style-type: none"> <li>• Users can perform a mass update of the values in a column. Items to be updated can be selected individually or through the use of a filter.</li> <li>• List views support multiple content types and display a <b>New</b> button for each content type so that the user can create items with different content types.</li> <li>• Users can copy or move documents (including their entire version history) between folders and between libraries.</li> <li>• Developers can configure <i>n</i>-level deep groupings.</li> <li>• Group headers can be configured to provide aggregate information in the group header on one or more fields using Sum, Min, Max, First, Last, and Count.</li> <li>• Users can dynamically create complex filters and sorts of the view.</li> <li>• List views can be implemented in "searcher mode" so that the view is empty until filter criteria have been selected to populate the view.</li> <li>• Users can create and manage folders with an interface similar to Windows Explorer.</li> <li>• Users can send e-mail from the view that contains links to the list, the list item, or the document.</li> <li>• The Custom Actions capability enables you to define additional buttons in the toolbar or context menu that run a pre-defined actions or program written in any .Net language.</li> <li>• Developers can show or hide any of the toolbar and context menu functions.</li> <li>• Developers can customize the look and feel by using skins.</li> <li>• Developers can create CAML using built-in CAML editors for both list items and folders. CAML editing supports all filter types, including date range filters.</li> <li>• List views can consume and provide filters from and to another web part.</li> <li>• List dependency is supported. That is, lists with child records can be set as dependent lists to prevent orphaned child records.</li> <li>• The custom display capability enables you to format the data in any way you want using HTML and javascript.</li> <li>• Users can export the data into Microsoft Word, Microsoft Excel, PDF or CSV.</li> </ul>
<b>qChartView</b>	<ul style="list-style-type: none"> <li>• Supports over 30 different types of 2-D and 3-D charts.</li> <li>• Supports the same data aggregation and filtering capabilities as the qListView.</li> <li>• Supports multiple data series of mixed chart types.</li> <li>• Highly customizable chart to fulfill your look and feel requirement.</li> <li>• qChartView can be linked to a qListView so that it shows the same data that you see in the qListView in chart.</li> <li>• Some chart types support animation.</li> </ul>

<b>qCalendar View</b>	<ul style="list-style-type: none"> <li>• Calendar views can display data from calendar list or any other lists that contains a date time field.</li> <li>• Supports the same data aggregation and filtering capabilities as the qListView.</li> <li>• Calendar View supports display in Month, Week, and Day views.</li> <li>• Manipulating the events in the Calendar view is intuitive. Drag and drop an event to another time slot in the calendar. Change the end time of an event by dragging the bottom of the event up or down. Delete an event or an instance of a recurring event by simply clicking the red x icon on the selected event.</li> <li>• Supports background and foreground colors.</li> </ul>
<b>qExcelView</b>	<ul style="list-style-type: none"> <li>• Allows you to export the data from the qListView into Microsoft Excel. The exported data can have a different set of columns than what are displayed in the qListView.</li> </ul>
<b>qDiscussion View</b>	<ul style="list-style-type: none"> <li>• Enables you to view the topics and responses in one tree list view</li> <li>• Enables you to aggregate discussions from multiple discussion lists, even lists from different sites, site collections or web applications that are in the same configuration database.</li> <li>• The preview panel enables you to preview the body of the selected topic or response.</li> <li>• The complex category ability enables you to display multi values and nested category like that in Lotus Notes. This capability requires you to create the topics and responses in qListForm.</li> </ul>
<b>qListForm</b>	<ul style="list-style-type: none"> <li>• Enables you to create, display and edit list item from list that resides in different site, site collection or web application that are in the same configuration database.</li> <li>• Easily create tabbed form and control which user groups can access the tabs.</li> <li>• You can create your own custom layout where you can arrange the controls in the form anyway you like it.</li> <li>• Fields can be auto-populated using list item that are selected in another Quest web parts.</li> <li>• Supports master-detail relationships between fields in the form (for example, State filters County). Fields can be lookup or cross-site lookup columns.</li> <li>• Supports AutoPostBack, which causes the lookup field or cross-site lookup field to refresh the form when the user changes the selected item.</li> <li>• Supports list dependency: the list form can update entries in one or more dependent lists across sites.</li> <li>• Supports custom actions: developers can define additional buttons in the toolbar that runs a set of pre-defined actions or programs written in any .Net language.</li> <li>• Supports implementation on any ASPX page and can connect to any list with appropriate security access.</li> </ul>

<b>qListForm (continued)</b>	<ul style="list-style-type: none"> <li>• The ability to provide row and filter to another web part or consume row from another web part.</li> <li>• Redirect user to specific pages when saving information.</li> <li>• Column titles can be customized and field descriptions can be added using plain text or HTML.</li> <li>• Column can be assigned a fixed value.</li> <li>• Columns can be hidden.</li> <li>• Columns can be set as read-only.</li> <li>• Multiple-choice columns can be displayed in n number of columns, as determined by the developer.</li> <li>• Text fields support data entry masks.</li> <li>• The list form can send an email that contains link to the new or edited item to the specified recipients.</li> <li>• The list form supports System Integration (SI) column that enables you to create a lookup field to your external data sources using our System Integration mechanism.</li> </ul>
<b>qSelector</b>	<ul style="list-style-type: none"> <li>• The selector displays data from a SharePoint list in a dropdown control. The selected item can be used to filter another web part or consumed by the qListForm.</li> <li>• The qSelector maintains the selection when you navigate to different pages, providing you with the capability to maintain the context of your work. For example, you can filter the data by the same project as you navigate from one page to another page in the Project Management application.</li> </ul>
<b>qMulti Selector</b>	<ul style="list-style-type: none"> <li>• A multi-selector contains multiple selectors where one selector can filter the subsequent selector giving you the master-detail capability.</li> <li>• The data from the last selector can be used to filter another web part or consumed by the qListForm.</li> <li>• Just like the qSelector, the qMultiSelector maintains the selection in all the selectors as you navigate from one page to another.</li> </ul>
<b>qItem Display</b>	<ul style="list-style-type: none"> <li>• qItemDisplay shows the item that was previously selected in another Quest web parts, such as qListView, qSelector, etc. The displayed item can be used to filter another web part or consumed by the qListForm.</li> </ul>
<b>qPanel Menu</b>	<ul style="list-style-type: none"> <li>• Displays hierarchical menu in multiple panels.</li> <li>• The ability to hide or show different menu group based on the group membership of the current user.</li> <li>• The panel can be expanded or collapsed.</li> <li>• The qPanelMenu menu items are stored in a SharePoint list enabling you to control menus in different sites centrally.</li> </ul>

<b>qCascading Menu</b>	<ul style="list-style-type: none"> <li>• The qCascadingMenu is similar with the qPanelMenu except it is presented like the dropdown menu in your Windows application to save the real estate on your page</li> <li>• Supports implementation in horizontal or vertical mode.</li> <li>• Supports icons.</li> <li>• Supports ALT-Key keyboard shortcuts.</li> </ul>
<b>qCaption Display</b>	<ul style="list-style-type: none"> <li>• Supports display of information from a central list of text or HTML, enabling the developer to implement text, graphics, and controls that can be implemented on multiple pages yet controlled from a central list.</li> </ul>
<b>qHelpLink</b>	<ul style="list-style-type: none"> <li>• Displays a help button or help text from a central list of URLs. The Help Link web part is invisible until the list it refers to is populated, which enables the developer to incrementally implement page-level user help.</li> </ul>
<b>qPage Redirector</b>	<ul style="list-style-type: none"> <li>• Provides the capability to redirect the user to a specific URL that is specified in the list based on their user name.</li> </ul>
<b>qSiList View</b>	<ul style="list-style-type: none"> <li>• The qSiListView enables you to display data from your external data sources, such as Microsoft SQL Server, Oracle, Domino Server, SAP, etc in the data grid.</li> <li>• Enables you to create a filter panel to filter the data. The filter can be passed to your backend system to limit the amount of data that are transferred to the SharePoint server.</li> <li>• Enables you to create custom toolbar buttons and context menu items that can execute one or more operations that are supported by your backend system.</li> <li>• It supports many other powerful features that are supported by the qListView such as data grouping, custom display, smart link, etc.</li> <li>• The qSiListView can interact with other non SI web parts in the suite enabling you to mix and match data in your SharePont list and external data sources.</li> </ul>
<b>qSiList Form</b>	<ul style="list-style-type: none"> <li>• The qSiListForm enables you to create, display or edit data from your external data sources, such as Microsoft SQL Server, Oracle, Domino Server, SAP, etc.</li> <li>• Enables you to create custom toolbar buttons that can execute one or more operations that are supported by your backend system.</li> <li>• It supports many powerful features that are supported by the qListForm, such as auto fill, row consumer, row provider, etc.</li> <li>• The qSiListForm can interact with other non SI web parts in the suite enabling you to mix and match data in your SharePont list and external data sources.</li> </ul>

<b>qSiChart View</b>	<ul style="list-style-type: none"><li>• The qSIListForm enables you to display data from your external data sources, such as Microsoft SQL Server, Oracle, Domino Server, SAP, etc in a very compelling 2D and 3D charts.</li><li>• It supports other features that are supported by the qChartView, such as animation, highly customization of the look and feel, etc.</li></ul>
<b>qSiSelector</b>	<ul style="list-style-type: none"><li>• The qSiSelector enables you to display data from your external data sources, such as Microsoft SQL Server, Oracle, Domino Server, SAP, etc in a dropdown control.</li><li>• Just like the qSelector, it maintains the selection as you navigate from one page to another in your application.</li><li>• The selected item can be used to filter another web part or consumed by a qSIListForm or qListForm.</li><li>• The qSiSelector can interact with other non SI web parts in the suite enabling you to mix and match data in your SharePont list and external data sources.</li></ul>