



Network Device Management with Foglight

Robust, Accurate Performance Monitoring and Reporting for Network Components

Foglight's network device management capabilities monitor and report on the performance and availability of network components in your infrastructure. This information is integrated with Foglight's application and service level management capabilities to enable a 360-degree view of application performance.

IT organizations today lack effective solutions for monitoring and documenting the failures of network components. As a result, they face significant challenges, including:

- Inadequate awareness of network or system capacity issues that impact the business
- Inability to prevent diminished service levels caused by network and system capacity degradation
- Long problem resolution time due to insufficient information
- Ever-increasing demands on IT staff

Foglight's real-time, self-synchronizing capabilities address network management shortfalls, giving your organization the ability to:

- Ensure availability by identifying capacity and performance issues
- Reduce downtime by enabling proactive management
- Automatically keep up with topology/device changes
- Enhance existing investments in systems management tools
- Accelerate implementation and ease administration, reducing time to value
- Lower costs by eliminating guesswork about usage levels
- Eliminate additional processing overhead with agentless monitoring

Customized, Granular Reporting, When You Need It

Foglight's reporting features allow you to run ad-hoc reports as well as customize the reports by time and resources to fit your company's unique needs. Performance data is gathered at a granular level, including the in-and-out octet metrics that compose the interface utilization reports in the categories below.

- Track compliance of your operational level agreements for the network
- Understand the impact of network performance on business service levels
- Prioritize the network issues impacting the business to properly allocate staff resources
- Get rapid assessments of current and historical performance with dashboards and reports
- Resolve network and capacity problems faster than ever

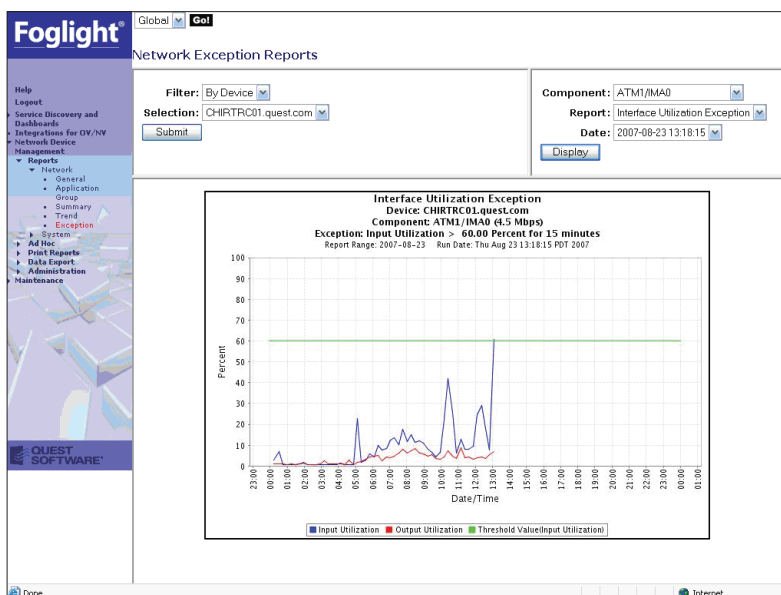


Figure 1: Interface utilization exception report in Foglight network device management

Foglight network device management includes coverage for:

- LAN/WAN
 - View capacity of both LAN switches and WAN routers in enterprise environments
 - Identify error rates on both LANs and WANs
 - Provide FECN/BECN reporting for your frame relay network
- Traffic Analysis
 - Identify top applications on your network through RMON 2 reports
 - Monitor class of service exceptions for QoS-configured devices
- System Resource Reporting
 - Track CPU, memory and disk utilization of both Unix and Windows systems
 - Provide capacity planning reports
- Availability and Latency
 - Provide availability for both system and network groups
 - Identify response-time problems with latency thresholds

System Requirements:

Supported Technologies:

- SNMP V1, V2c
- WMI 2000, 2003, XP
- RMON and RMONII
- JDBC used to collect on databases

Supported Networks:

- LANs, WANs, wireless LANs, routers, switches, ATM, frame relay, end-to-end PVCs, DSL, MPLS, IP VPN, and VoIP

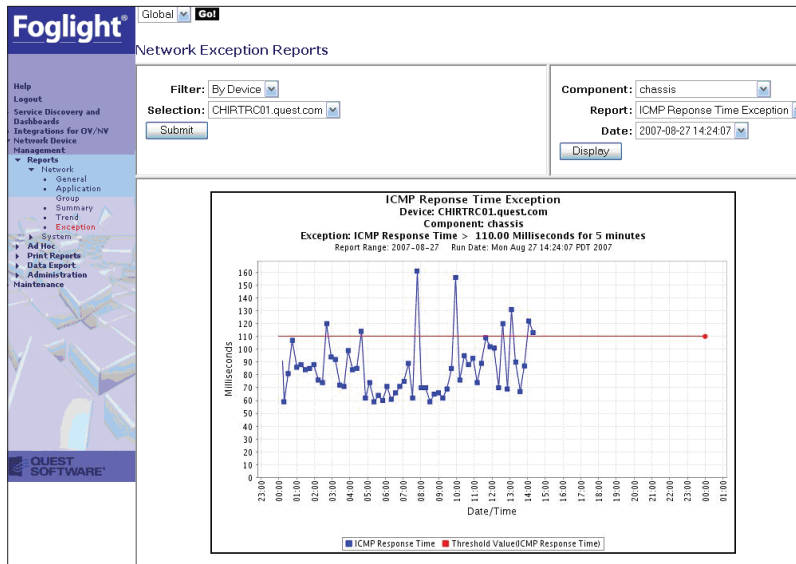


Figure 2: Response time exception report in Foglight network device management

Exception Reporting: Foglight provides reporting based on end-user exception requirements. During any of the reporting intervals, if this limit is exceeded the exception will be noted. A device graph with an illustration of the exceptions is available for display.

Ad-Hoc Reporting: Users can combine metrics from different MIBs (Management Information Bases) to generate meaningful correlations between metrics.

Trending and Capacity Planning: Foglight provides out-of-the-box trend reports based on changes over time. This historical trending capability provides accurate, detailed statistics that you can use for capacity planning and provisioning.

How Foglight Works

Foglight gathers performance data through SNMP polling or CIM polling (in the case of WMI services). The SNMP polling is performed directly from the host where Foglight is loaded, but this function can be distributed to several SNMP polling instances. The CIM polling for WMI services is performed by the NT Adapter host, which feeds information to the databases for report generation and ad-hoc reporting. Foglight can poll from multiple sources, including both the SNMP and CIM (Windows adapters), allowing you to tailor the management of traffic to your unique environment (i.e. location and size).

Leveraging Existing Technology Monitoring Solutions

While Foglight provides several methods to create a resource database, you can also leverage existing systems, such as OpenView or NetView, to simplify administration. This approach reduces the total cost of ownership with Foglight network device management.

About Quest Software, Inc.

Quest Software, Inc., a leading enterprise systems management vendor, delivers innovative products that help organizations get more performance and productivity from their applications, databases, Windows infrastructure and virtual environments. Quest also provides customers with client management through its ScriptLogic subsidiary and server virtualization management through its Vizioncore subsidiary. Through a deep expertise in IT operations and a continued focus on what works best, Quest helps more than 100,000 customers worldwide meet higher expectations for enterprise IT. Quest Software can be found in offices around the globe and at www.quest.com.



www.quest.com
e-mail: info@quest.com
Please refer to our Web site for international office information.

© 2009 Quest Software Incorporated. ALL RIGHTS RESERVED. Quest Software and Foglight are trademarks and registered trademarks of Quest Software, Inc. in the U.S.A. and/or other countries. All other trademarks and registered trademarks are property of their respective owners.